



\*Not CPS-issued

**Student tests positive for COVID**

Parents contact CPS at [cps.edu/covidresults](https://cps.edu/covidresults) **AND** encouraged to inform administration at [clcallahan@cps.edu](mailto:clcallahan@cps.edu) with first day of symptoms and last day in the building

Family and school wait to hear from CPS Contact Tracing

Administration works with the Network Chief to determine if flip to remote learning is actionable

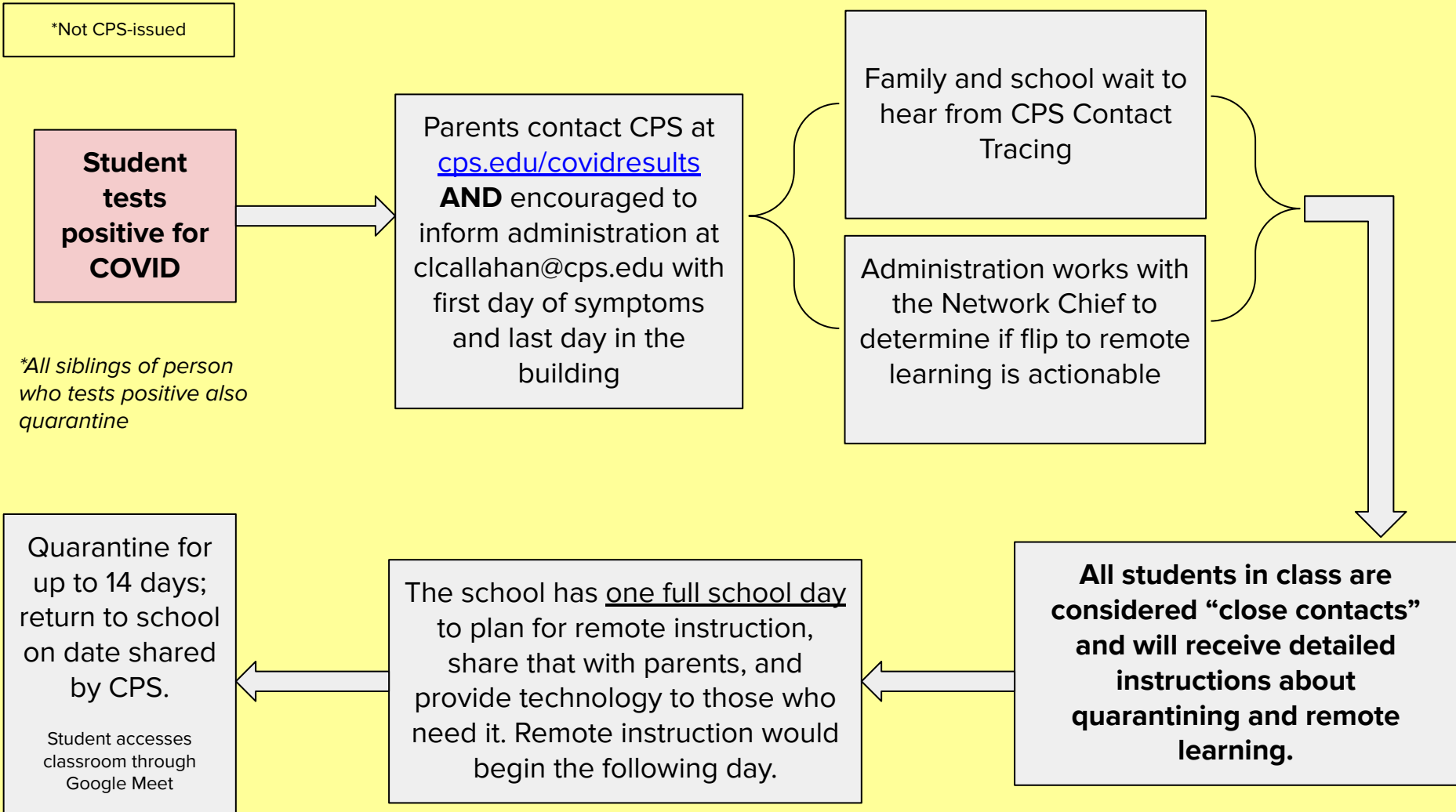
*\*All siblings of person who tests positive also quarantine*

Quarantine for up to 14 days; return to school on date shared by CPS.

Student accesses classroom through Google Meet

The school has one full school day to plan for remote instruction, share that with parents, and provide technology to those who need it. Remote instruction would begin the following day.

**All students in class are considered “close contacts” and will receive detailed instructions about quarantining and remote learning.**



\*Not CPS-issued

**Student travels to  
“high risk” state**  
(see list [here](#))

\*Learn more about  
international travel  
[here](#)

Student is **vaccinated**  
and not showing  
symptoms

Student returns to school **with proof of vaccination**. No  
test is required.

Student is **vaccinated**  
and symptomatic

Student quarantines and **gets tested 3-5 days after  
travel** and **returns to school with negative test**.

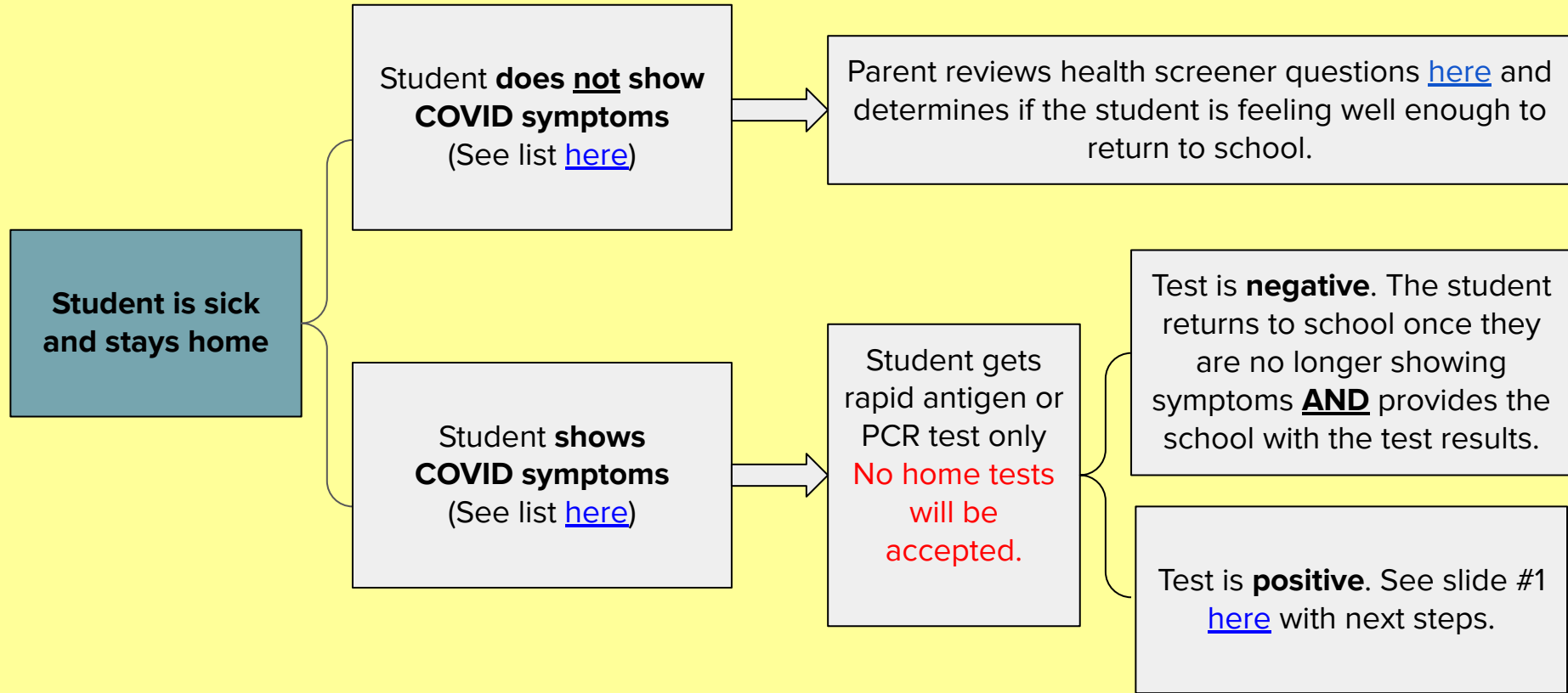
Student is  
**unvaccinated**

**With a negative test from a medical facility**, the student  
self-quarantines for a full 7 days. The test must be turned  
into the school prior to or upon arrival of the student.

**With no test**, the student self-quarantines for a full 10  
days.

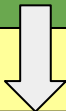
If a child is quarantining for travel reasons, they will not have access to remote learning.  
They will receive asynchronous work.

\*Not CPS-issued



Students access work directly from the teacher or in Google Classroom.

**Student is sent home sick from school**



All students sent home with COVID-like symptoms (see list [here](#)) should be isolated until they get a rapid antigen or PCR test only.

If **diagnosed with an alternative diagnosis**, students must meet the criteria for returning to school for the illness **AND** have improvement of symptoms (without fever reducing medication) for 24 hours.

If **student does not test or receive alternative diagnosis from a doctor**, they must stay home for at least **10 days** from the onset of symptoms **AND** have improvement of symptoms (without fever reducing medication) for 24 hours in order to return to school.

Student gets tested at a medical facility  
**No home tests will be accepted.**

Test is **negative**. The student and siblings returns to school once they have improvement of symptoms (without fever reducing medication) for 24 hours **AND** provides the school with the test results.

Test is **positive**. See slide #1 [here](#)

\*Not CPS-issued

**Students would access work either directly from the teacher or in Google Classroom.**

\*Not CPS-issued

**Student was exposed to someone who tested positive outside of school**

**\*Please contact administration to inform them if this does occur**

Student is **vaccinated and does NOT have symptoms.**

Student **returns to school** following contact from administration

Student is **vaccinated and showing symptoms OR is unvaccinated.**

They get tested 3-5 days from exposure at a medical facility (rapid antigen or PCR tests only))

If positive, see [slide 1](#)

If negative, continue to quarantine for up to 14 days from last exposure

Family waits to hear from CPS Contact Tracing and the child stays home from school

Student completes asynchronous work unless they present documentation required for synchronous instruction

**Those presenting documentation will get more detailed instructions about remote learning.**

The school has one full school day to plan for remote instruction, share the plan with parents, and provide technology to those who need it. Remote instruction would begin the following day.

Quarantine for up to 14 days; return to school on date shared by CPS.

Student accesses classroom through Google Meet